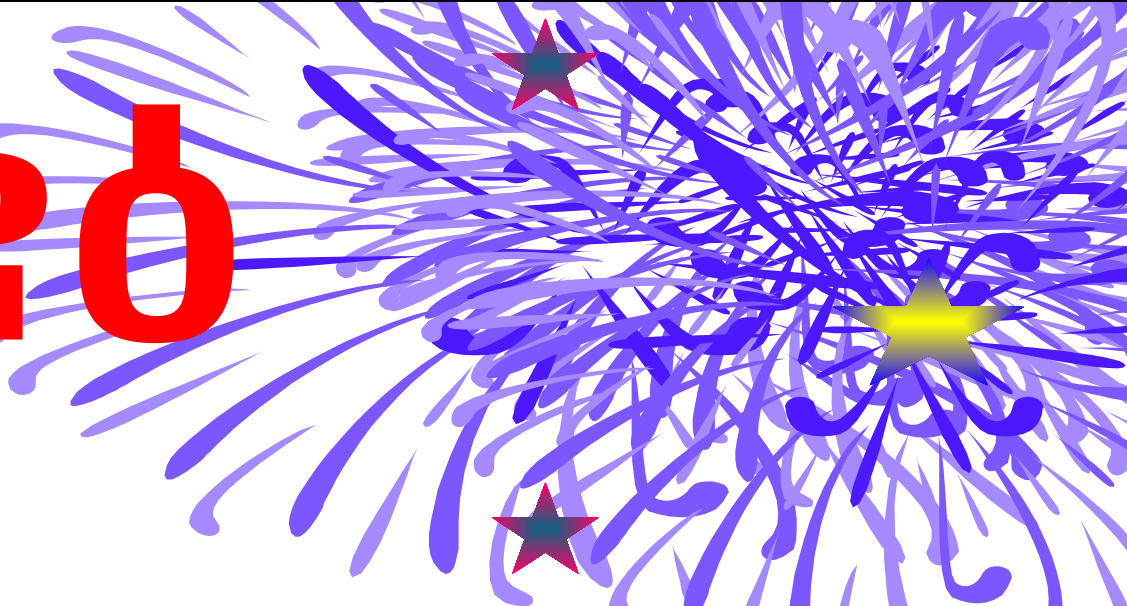
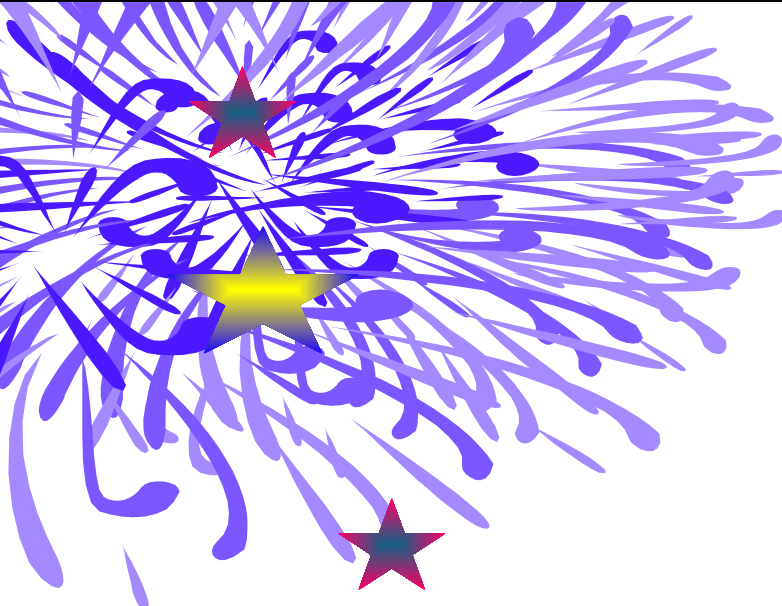


እንቋፅ

ናብ

ማደደፍ

ብሰላም መፃኹም።



**ካቶሊካዊት ቤተክርስቲያን
ኢትዮጵያ ኮሚሽንን ማህበራዊና
ልማት ኮሚሽንን ጨምሮ አዳግራት**



**ማህበረ ደናግል ደቂ ፍቅር
መተሓገበረ ቤት ፅሕፈት ትግራይ**



Brief Overview of DoC's Major Interventions & Activities

By: H/mariam Meles

DoC Senior Comn.& PR Officer

Dec,2025
Samre

Presentation Out Line

Introduction

Mission & Vision

Our Scope

Significant Impacts

- Who are we?

- DoC's Vision, Mission & Core Values

Major Program & Project area

- Our Success

Who are we?



The Daughters of Charity (DoC) is a Catholic faith-based organization working under the auspices of the **ECC**.

Founded in the **17th C (1633)**, by **St. Vincent de Paul and St. Louise de Marillac** in Paris, **France**.

Founded in **1927 in Ethiopia** and in **1973** in Tigray;

International Congregation **present in 97 Countries**

We operate in the Region Under the **ECC-SDCO-Adigrat Branch**, with registration number **0756**



ማደደፍ መን እዮም?

• ማ/ደ/ደ/ፍ/(DoC.) አብ ካቶሊካዊ እምነት ዝተመስረተት ትካል ኮይና፡ ብሓልዮት ካቶሊካዊት ቤተ ክርስቲያን ኢትዮጵያ እትንቀሳቕስ ማሕበር እያ፤

• እብ መበል 17 ክፍለ ዘመን 1633 ኢ/ኤ አብ ፈረንሳይ ብቅዱስ ቪንሰንት ደ ጳውሎስን ቅድስቲ ሉዊስ ደ ማሪላክን አብ ፓሪስ ተመስረተት።

• ብ1927 ከዓ አብ ኢትዮጵያ ድሕሪኡ እውን ብ1973 አብ ትግራይ ተመስረተት። ።

• አብ ክልልና አብ ትሕቲ ጨንፈር ካቶሊካዊት ቤ/ክርስቲያን ሰበኻ ዓዲግራት ኮይና ብቁፅሪ ምዝገባ ፍቓድ 0756ንሰርሕ ንርከብ።



Cont..

WHO ARE WE?



Major Social, Development & Humanitarian Programs

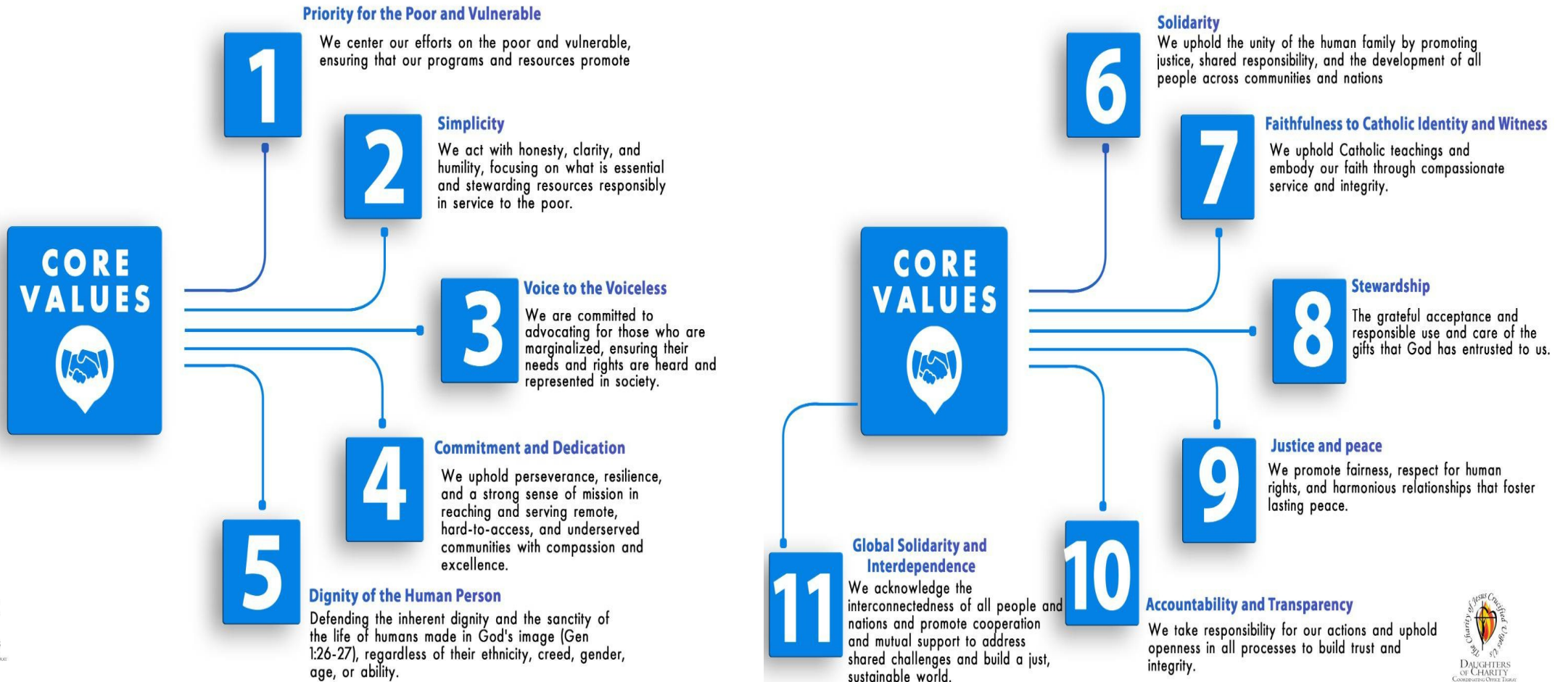


Vision

Vision: DoC envision a **peaceful** and **resilient** society where the love of Christ inspires **dignity** and **integral human development**.

Mission: Inspired by the spirit of Christ, the Daughters of Charity in the Diocese of Adigrat serve vulnerable communities with compassion, promoting dignity, resilience, and peace through integrated humanitarian and development action.

Our Core Values



Cont....

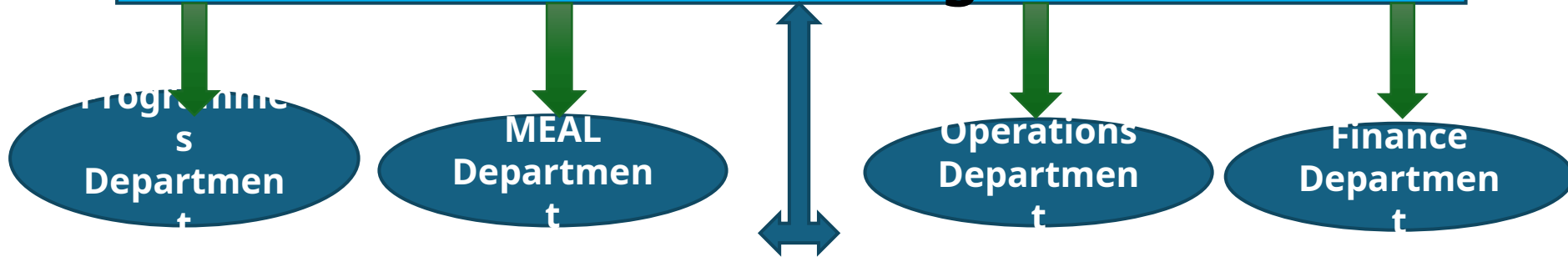
☐ **Our services** are always **guided** by the **core values** of **human dignity**, **compassion**, and **love**



Organizational Structure

Ethiopian Catholic Church - Social and Development
Commission - Adigrat Branch (0756)

Daughters of Charity - Tigray
Main Coordinating Office



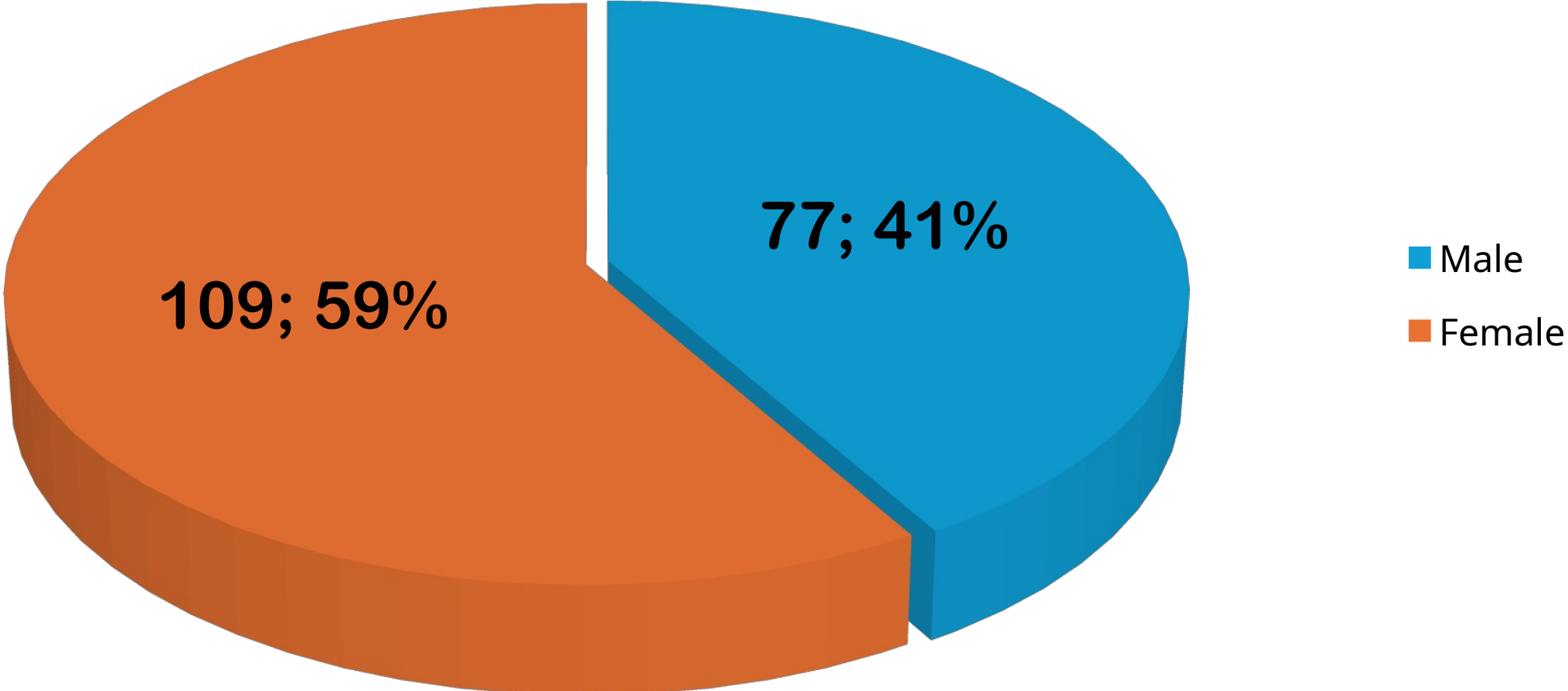
Mekelle
Branches since
1973 & 1985

Alitena
Branch
since 1974

Maichew
Branch since
2005

We have over 180 staff members at the Coordinating Office, of whom 67% are qualified professionals.

Gender Profile of Employees at the DoC Coordinating Office



Our Enduring Impact and Reach

670,442 K+

**Individuals Reached
Annually**

Serving over 658,442
vulnerable individuals &
Survivals of GBV& IDPs every
year across 25 districts.

One bl.+

Annual Budget in Birr

Mobilizing over a total
budget of a total
budget of **€ 8,978,285**
(over 1 Billion)

13+

Active Projects

Running more than ten
diverse projects
tailored to community
needs.

5

Zones Covered

Extending our reach
across five key zones
within Tigrai.

Participants/ Target Groups include

**School
Children**

**survivors of
GBV**

**female-
headed
families**

**Pregnant &
breastfeedin
g**

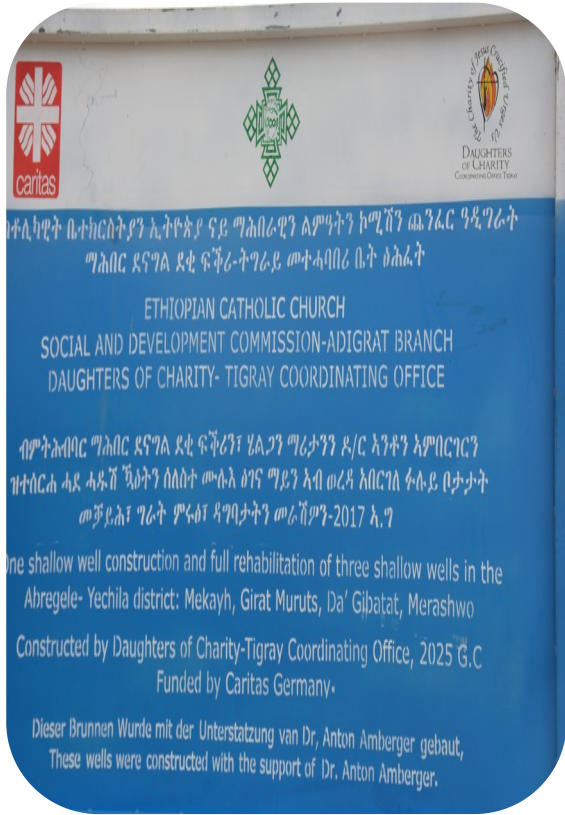
Elders

**unemployed
youth (young
Women**

**People with
chronic
illnesses**

**War affected
community**

Ongoing Key Programms & Projects of DoC



Social Program

School Feeding

EL&FS

Protection

ACTIVE PROJECTS OF DOC- TCO

Program	No	Project Title	Basic Interventions	Intervention Area	Donor	States
School Feeding	1	School Feeding	Feeding school children daily	Across a total of 524 schools situated in 20 districts across five zones of Tigray.	Mary's Meal ()	Ongoing
Social Program	1	Abergele-Yechila	<ul style="list-style-type: none"> ▪ Education Support ▪ Rehabilitation & Reconstruction Schools health posts ▪ Lively hood support ▪ Medicine & Medical supply & Equipment supply 	<ul style="list-style-type: none"> ▪ Aberegele Yechila 	Caritas Germany	Ongoing
	2	Aba G/Michael	<ul style="list-style-type: none"> ▪ Providing daily meal (400 stds) ▪ Education & Personal hygiene materials support ▪ Psychosocial support ▪ Strengthen Family Economy 	<ul style="list-style-type: none"> ▪ Mekele 	Caritas G MWAM/ UK	
	3	The Biqu'e Men'esey (ብቂዕ ሙንእሳይ)	<ul style="list-style-type: none"> ▪ to empower adolescents and young people 	<ul style="list-style-type: none"> ▪ Maychew, Selewa 	Master Card Foundations	

CONT....

Program	No	Project Tittle	Basic Interventions	Intervention Area	Donor	States
Prote ction	1	GRIT	<ul style="list-style-type: none"> ▪ GBV Prevention & Response ▪ MHPSS ▪ Women & Girls Empowerment 	Edaga hamus, Freweyni Raya Azebo (Mechare), Endamohoni (Mesiwaeti & Shimta), Selewa	CST+ Irish Embassy	Ongoing
	2	ICSP	<ul style="list-style-type: none"> ▪ GBV Prevention & Response ▪ MHPSS ▪ Women & Girls Empowerment ▪ 	Samre	CST+ Irish Embassy	Ongoing
	3	Pathway to Peace	<ul style="list-style-type: none"> ▪ GBV Prevention & Response ▪ MHPSS ▪ Women & Girls Empowerment 	Maychew Alaje,	ELiDA+ UKAID (MMI/UK)	Ongoing
	4	Safe Future	<ul style="list-style-type: none"> ▪ GBV Prevention & Response ▪ MHPSS ▪ Women & Girls Empowerment ▪ 	Mokoni	French Embassy	Ongoing

CONT....

Program	No	Project Title	Basic Interventions	Intervention Area	Donor	States
Emergency, Lively hood & food security	1	Enhancing Health and Nutrition for Children, Pregnant, and Lactating Women in the Conflict- and Drought-Affected Areas of Irob District	<ul style="list-style-type: none"> Providing support for malnourished children aged six months to five years, as well as pregnant and lactating mothers. 	<ul style="list-style-type: none"> Irob District 	ADIA	Ongoing
	2	Restoration of Alitena Primary Health Center in the Irob District, Eastern Zone of Tigray, Ethiopia.	<ul style="list-style-type: none"> Restoring the Alitena Health Center to improve healthcare access. 	<ul style="list-style-type: none"> Irob District 	eRko	Ongoing
	3	Delivery of Essential Health and Nutrition Services to Communities Affected by Conflict and Drought in Irob District, Eastern Zone of Tigray, Ethiopia.	<ul style="list-style-type: none"> Providing supplementary food for malnourished children and support for pregnant and lactating mothers, along with essential health services. 	<ul style="list-style-type: none"> Irob District 	ERko	Ongoing
	4	Reaching Their Potential: Girls Gain FY 2024/25 Project(GGP)	<ul style="list-style-type: none"> Providing scholastic materials, in-kind start-up capital for out-of-school girls, office furniture ,Tutorial class, Establishing and furnishing safe spaces Ensuring gender equality 	<ul style="list-style-type: none"> Adigdom, Seaharti, Hintalo and Edaga Hamus) and three sub cities of Mekelle (Adihaki, Ayder, and Quha) Target Primary Schools: St. Anna, Mywini, Micheal Debrehayla, Adihtsan, Hawatsu, Mariam-Dehan, and Thtay-Egrihariba 	CRS	Ongoing

1. Social Program

1.1. Health sub program



- Provision of eye care services



- Provision of **health and nutrition services**, along with the **rehabilitation** of the Alitena Health Facility that was damaged by Eritrean forces."



- Medical supplies delivered to health facilities in Jijie, Siye, Edagahamus, Freweini, Mechare, Selewa, Meswaeti, Shimta, and Samre."
- Rehabilitation of **three health facilities** – Grure, Neway & Negedeberhan

Through our health interventions, we serve more than 110,000 community members

OUTCOMES

Improved Access to Healthcare:

- enhanced the capacity of health care facilities, ensuring timely and effective care for the community.

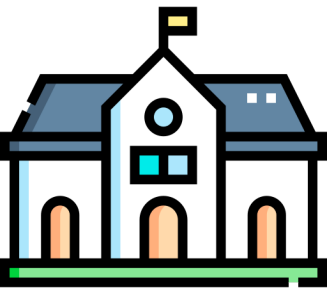


Improved Vision and Quality of Life:

- led to building confidence, Social integration and increased participation in economic activity etc.

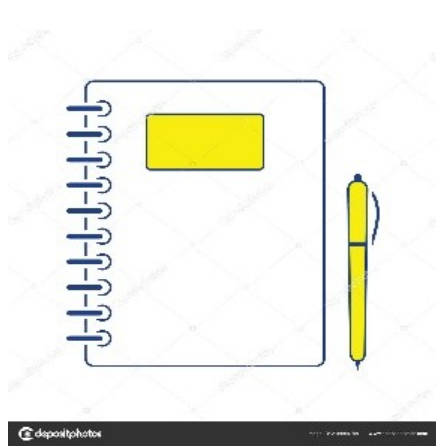


1.2. Education sub program



- 3 Kindergarten in **Alitena**, **Mekelle** and **Maichew** access to education using **Montessori Method**:
- **The Montessori approach**, founded by Dr. Maria Montessori, promotes hands-on, self-directed learning. At Sebacare IDP site in Mekelle, 408 children (ages 3–6) accessed Montessori-based education and care, with guide training offered over 3, 6, and 9 months.”
- **One Complete Primary School -Maychew**
- **Assisted 12 public schools** across Abergele, Mekelle, Edagahamus, Adigudom, Seharti, and Hintalo, benefiting over 2,800 students

Scholastic Materials Support





1.3. Access to water and Sanitation



- Water facilities **construction** and **rehabilitation** to enhance access to clean and safe drinking water.



- Distribution of sanitation materials

GENERALLY, THROUGH OUR EDUCATION SUB PROGRAM, DELIVER SERVICES TO **OVER 38,407 SCHOOL CHILDREN**



Hand washing soaps, Washing powder, Sanitary napkin, Disposable pads, underwear, & Whistle reaching 3,550 vulnerable students



- We **constructed and rehabilitated 28 water schemes**, improving access to clean and safe drinking water to a total of **35,852** community members
- Of these, **17 water points** were constructed in schools provided **access to 30,094 students**

GENERALLY, THROUGH OUR EDUCATION SUB PROGRAM, DELIVER SERVICES TO **OVER 38,407 SCHOOL CHILDREN**



ከተለያዩት ቤተክርስቲያን ኢትዮጵያ ናይ ማሕበራዊን ልምዳትን ኮሚሽን ጨንፈር ዓዲግራት ማሕበር ደናግል ደቂ ፍቅር-ትግራይ መተሓባበሪ ቤት ፅሕፈት

ETHIOPIAN CATHOLIC CHURCH
 SOCIAL AND DEVELOPMENT COMMISSION-ADIGRAT BRANCH
 DAUGHTERS OF CHARITY- TIGRAY COORDINATING OFFICE

ብምትሕብባር ማሕበር ደናግል ደቂ ፍቅርን፤ ሄልጋን ማሪታንን ዶ/ር ኣንቶን ኣምበርገርን ዝተሰርሐ ሓደ ሓዳሽ ጭቅን ሰለስተ መሓ-እ ፅገና ማይን ኣብ ወረዳ ኣበርገል ፉሉይ ቦታታት መቻይል፣ ግራት ምሩቅ ዳግባታትን መራሽምን-2017 ኣ.ግ

One shallow well construction and full rehabilitation of three shallow wells in the Abregele- Yechila district: Mekayh, Girat Muruts, Da' Gībatat, Merashwo
 Constructed by Daughters of Charity-Tigray Coordinating Office, 2025 G.C
 Funded by Caritas Germany.

Dieser Brunnen Wurde mit der Unterstutzung van Dr, Anton Amberger gebaut,
 These wells were constructed with the support of Dr. Anton Amberger.



2. Humanitarian, Livelihood & Food Security Program

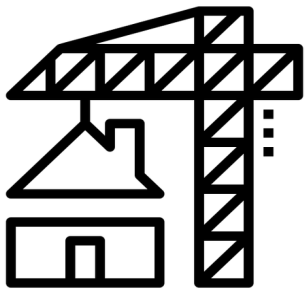


HUMANITARIAN AID

- During the conflict period (2020-2022), we provided life saving food & NFI assistance to **over 220,000 IDPs and host communities**



- We delivered life saving food assistance to **9,786 Internally Displaced Persons (IDPs) including host community, PLW & Orphaned student**
- We delivered **over 27 M Birr in emergency cash to 2,934 SGBV**



- We delivered **50 M Birr in support of 2,650 survivors** and female headed households to restore their livelihoods
- **Over 3000 Vulnerable** HHs received decent houses

GENERALLY, THROUGH OUR HUMANITARIAN, LIVELIHOOD & FOOD SECURITY PROGRAM, WE DELIVER SERVICES TO **OVER 239,000 IDPs & HOST COMMUNITY MEMBERS**







3. Protection Program



- During the conflict in Tigray, a wide range of atrocity had been committed including, damage to social & economic infrastructure, killings of civilians and Sexual & Gender Based Violence including gang rapes
- 8 WGSS sites as entry points for women and we support a total of over 21,000 survivors including adolescent girls, women, and People with Disabilities (PWD) through:
 - Soft & hard skill, Group PSS, individual counselling, emergency cash for purchase of food & medicine, including referral linkage to health facilities and legal institutions and livelihood support

OUTCOME

- **Recovery from Trauma:** Individuals that have received the necessary PSS support recovered from trauma
- **Economic Empowerment and Stability:** Livelihood support packages improved their financial independence and helped rebuild their lives with greater stability.



4. School Feeding Programme

DONOR

mary's
meals

a simple solution
to world hunger

Every child receives **one daily meal** in their place of education and that all those who have more than they need, share with those who lack even the most basic things.



- Operates in **16 Countries** of which **12** are in Africa
- Serving **3 million** school children

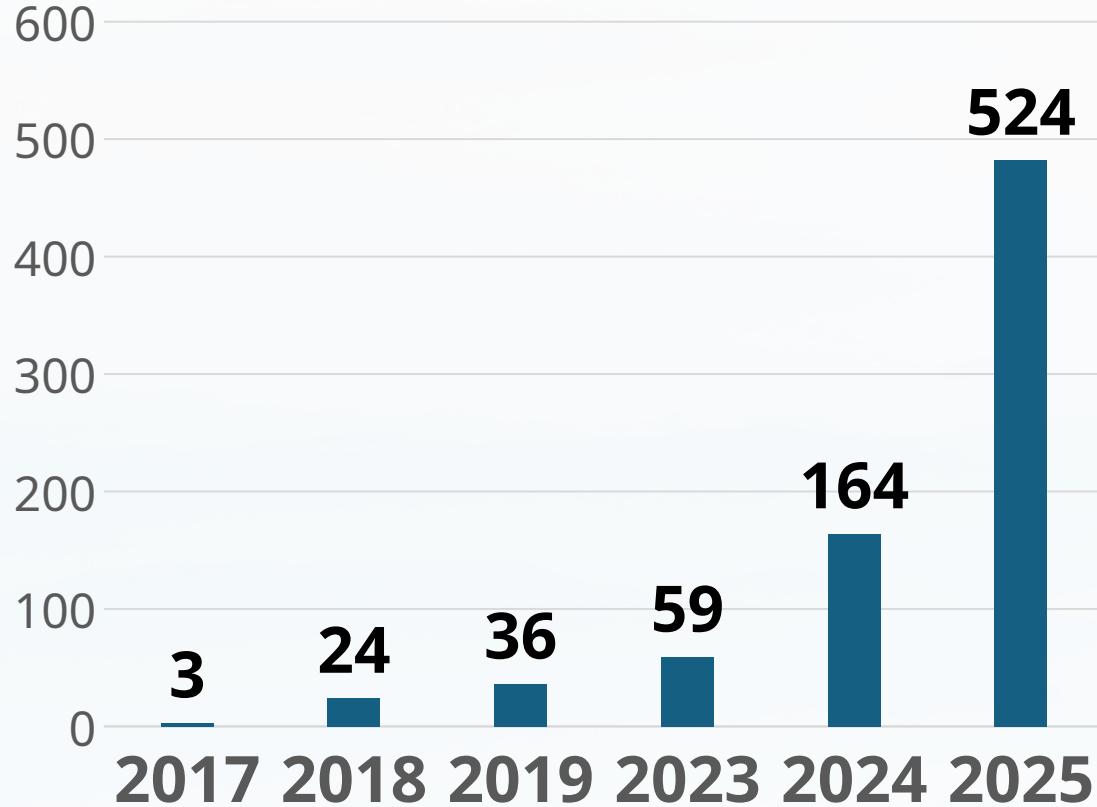
Objective of SFP:

School feeding programs are **multi-sectoral** and can contribute to **at least 17 SDGs**, with **strongest impacts on SDGs 1, 2, 3, 4, and 5**.

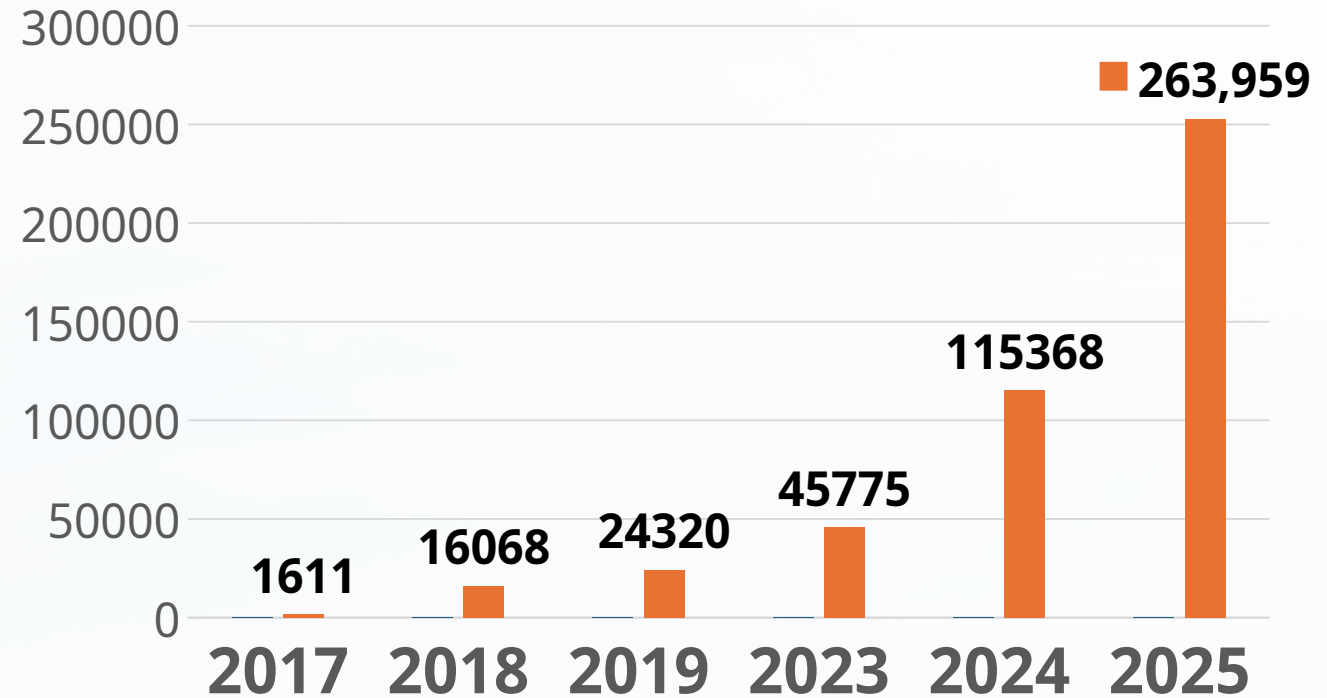
SDG	Goal Name	Relation to School Feeding Program
1	Reduce Poverty	Reduces household food costs and supports vulnerable families, acting as a social safety net .
2	Zero Hunger	Directly addresses child hunger and malnutrition by providing regular , nutritious meals.
3	Good Health and Well-being	Improves children's nutrition, physical growth, and health outcomes.
4	Quality Education	Increases enrollment, attendance, and learning by reducing hunger-related barriers to learning.
5	Gender Equality	Encourages families to send girls to school, especially where girls are traditionally excluded from school.

Scaling up of the School Feeding Program

of Schools

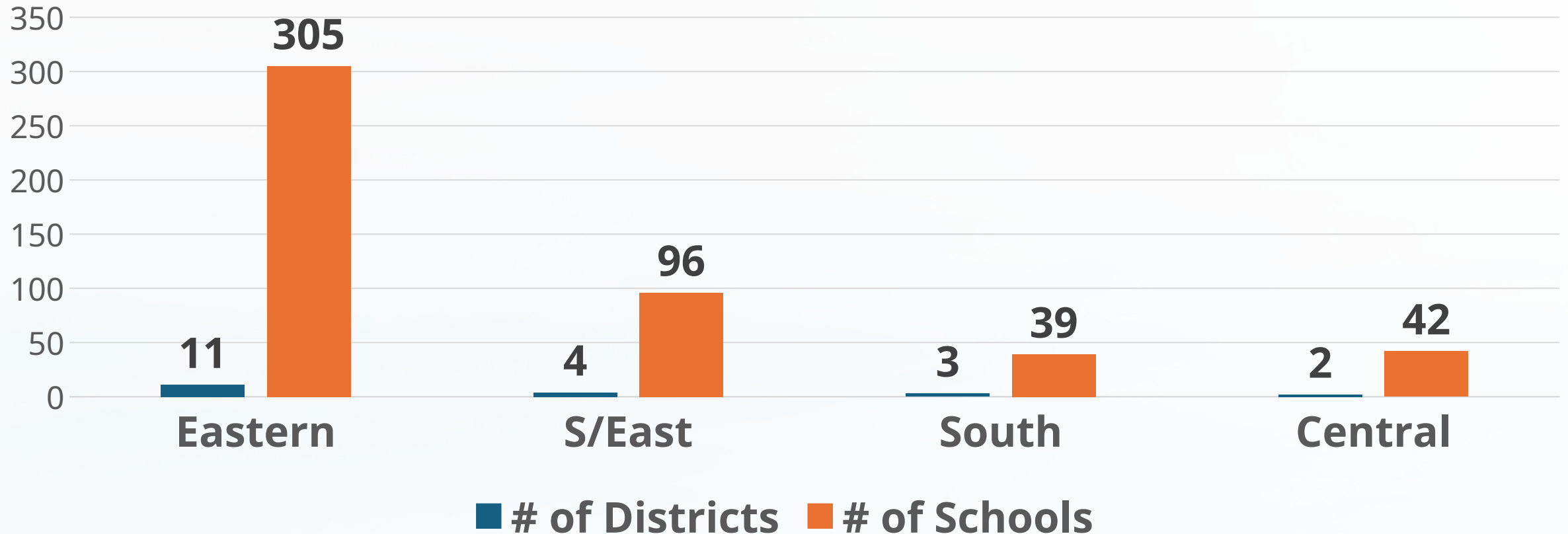


of Students



■ # of schools ■ # of Students

Regional Spread of School feeding Initiatives Tigray



We currently work in 20 Districts, 4 Zones

Major Activities

1. School Selection Process

Collaboration with Education Bureau and local administration units for school identification.

Targeting and selection of schools

Set Selection criteria

- 1. Schools located in areas with severe food insecurity and crisis impact**
- 2. High Dropout rate/migration/attendance rate/ low enrolments**
- 3. Infrastructure such as road, operational considerations**

2. Orientation and **MOU** Signing with School Communities

- ❑ Partnerships were formalized through (MOUs) with school communities.
- ❑ These MOUs outlined: commitments, expectations, resource allocation, and monitoring mechanisms. They covered provisions such **as firewood, water, volunteer cooks, dining rooms, loading and unloading procedures, and storage.**
- ❑ Signed MOUs served as a commitment to the program's success.



3. Delivery of Food and Non-Food Items

- ❑ **Delivery of Famix Bi-Monthly** (due to **stock controlling** and **lack storage** facility)
- ❑ **Provision of kitchen utensils**
 - Provided kitchen utensils, cooking pots, measuring buckets, measuring jugs, serving plates, plastic dish pan, spoons, hand washstand, cook safety wear, and other utensils to each targeted school
 - Plates and other utensils are **managed by School Feeding Committees (SFCs)** in the schools
- ❑ **Provision of non-food items (NFI)**
 - Provided hand wash soap to ensure sanitation and hygiene of target students to schools

Distribution of Famix and cooking materials to Intervention Schools

SN	Kitehcn Items	Standard	Quantity delivered	Estimate d unit price	Total cost
1	Famex		48,237	9,880	476,582,400
2	Oil		34,473	1500	51,710,250
3	Soap		139,400	36	5,027,400
4	Cooking pot	1 to 180	1404	17,500	24,570,000
5	Spoon ladle	1 to 180	1404	150	210,000
6	Serving plate	1 to1	252,770	23	5,813,710
7	Spoon	1 to 1	252,770	24	6,066,480
8	Measuring jug	4 to 1 school	1928	18	34,704
9	Measuring bucket	4 to 1 school	1928	45	86,760
10	Handwashing stand	1 to 250 students	1011	3800	303,300
11	Plastic dish pan	4 to 1 school	1928	260	501,280
	Total				565,878,884



Cooking Pot

4. School Feeding Committee Establishment

School Feeding Committees are comprised of representatives from teachers, community leaders, parents, the PTA, students, and volunteer cooks, totaling 8-10 members per school.

Community Involvement

The school feeding committee is a vital link between schools and communities, ensuring local input and ownership in the program.



5. Provision of Hot meal per school day

100 gm famex, 0.3 gm oil
& 0.5 gm soap

We provide meals for **190**
school feeding days each year
(as per Qelenten).



Impacts/Outcomes of the Program

1. Reduction of Hunger

The school feeding program has had a strong impact.

Hunger reduced significantly

Before it began, **72%** of students felt hungry at school,
After implementation, **95%** felt very full,

Focus improved significantly

62% had trouble concentrating before, but **78%** now report focusing "very well."

Teachers also observed better energy and attention in class..



5. Increased Parental Involvement

The school feeding program has also had a significant result on parental involvement.

Parents are more motivated to send their children to school, knowing their food needs are being met.

Low-income households feel relieved of the daily burden of feeding their children during school hour. This reduced stress can lead to a more positive and supportive home environment.

2. Improvement in Attendance/Enrollment

Student attendance rates significantly improved.

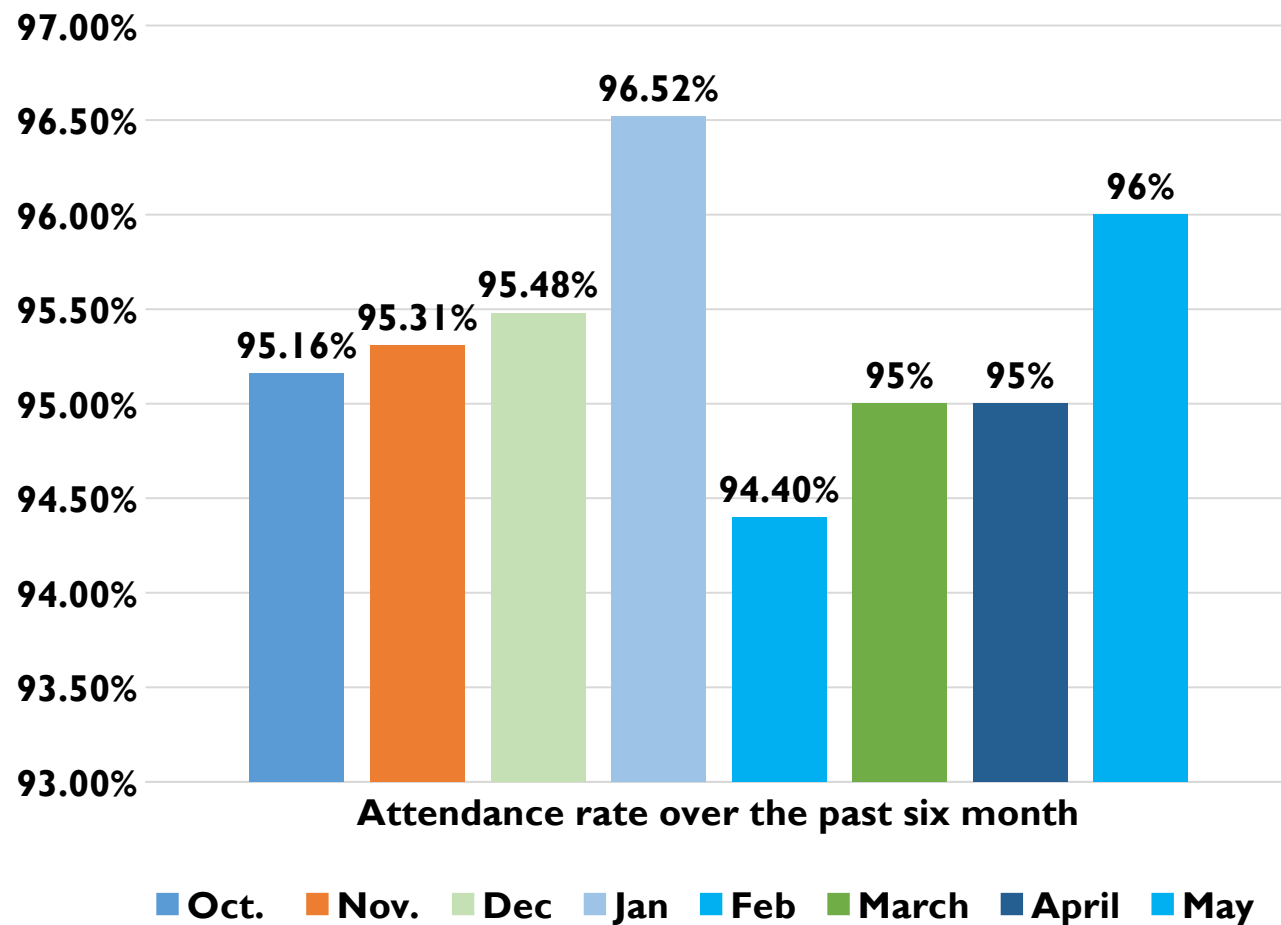
Before the program, 78% of students missed school due to hunger-related issues.

After its implementation,

94.6% of students reported not missing school for this reason, and

87% never *left early due* to hunger.

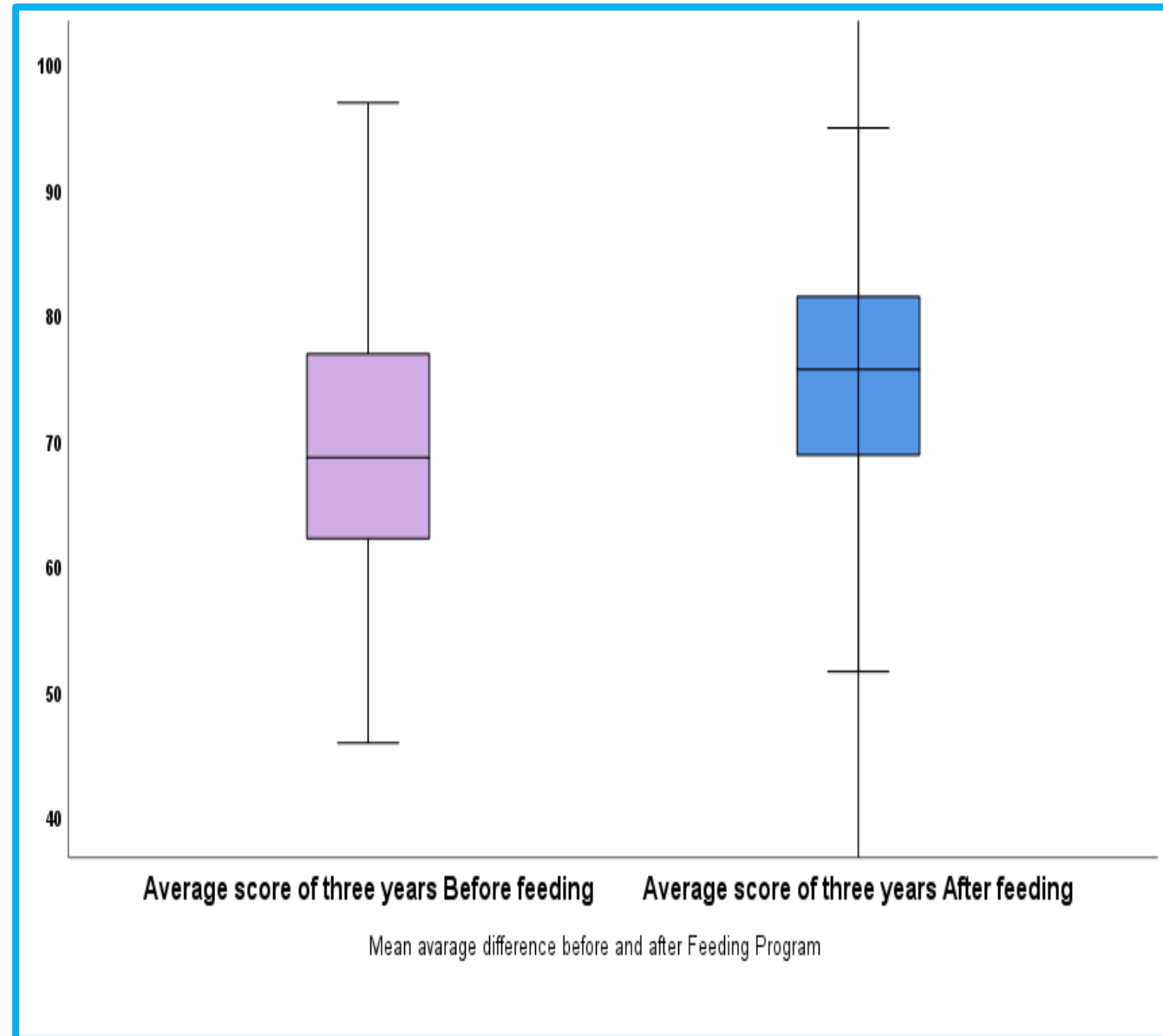
- Student enrollment is 96% while 42% in non-feeding schools



3. Concentration in class

Improvement in academic performance.

- Initially, **62%** of students struggled with concentration,.
- However, after the implementation of the program, **78%** of students reported concentrating 'very well,'



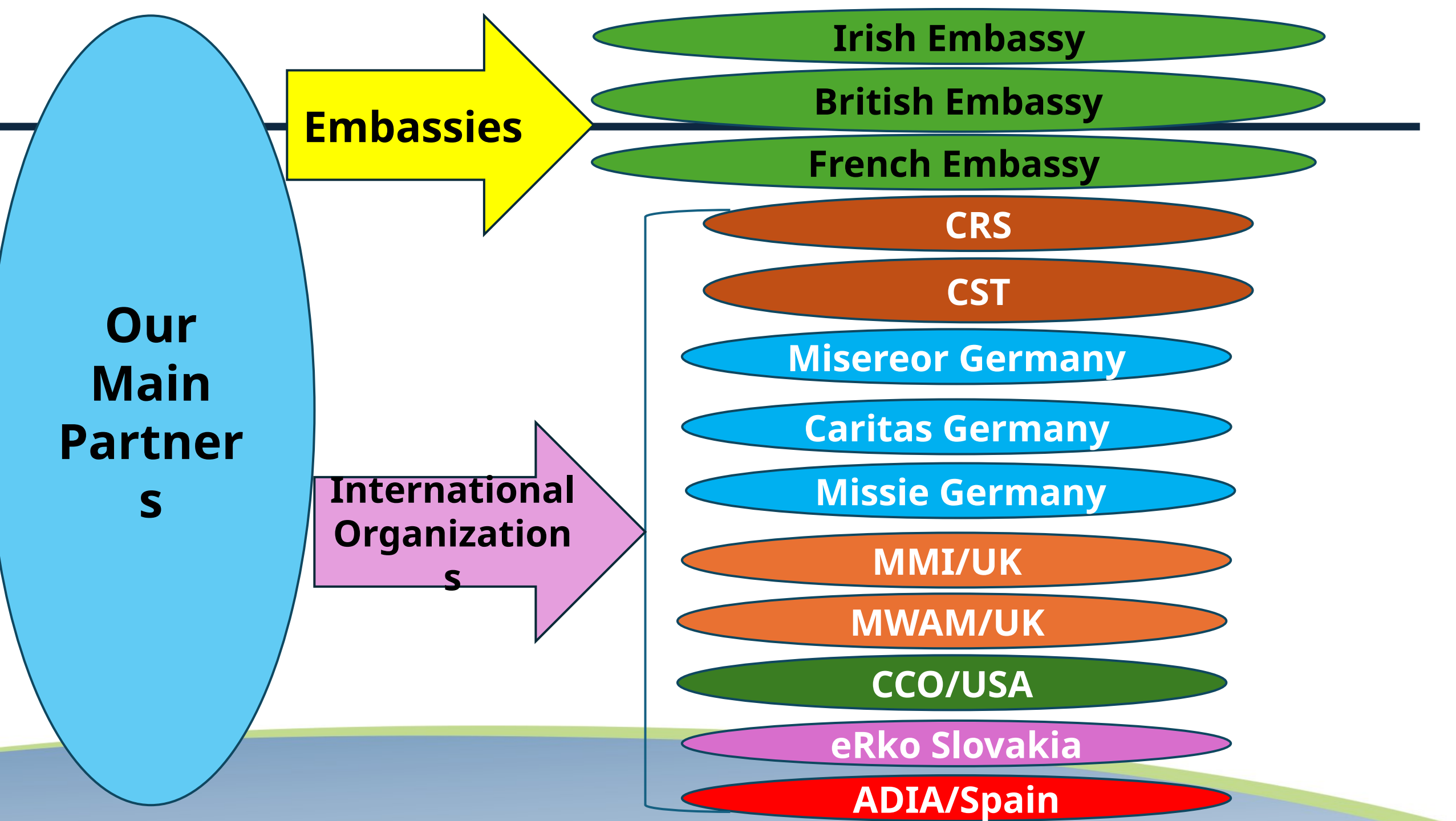
4. Enhanced Social Interactions

The feeding program has fostered better social interactions among students.

Prior to its implementation, many students were preoccupied with hunger, which hindered their ability to engage with peers.

Post-program, more students are participating in play activities; 28% of students now play daily at school, compared to a prior environment where 45% never interacted during breaks.





Global Influence & Award



Mary's Meals • Follow

17 Aug ·

Sister Medhin Tesfay's moving testimony at the **Medjugorje Youth festival** will leave you feeling inspired and motivated to make a difference!

This year at the festival, officially known as Mladifest, she talked about how she is about working with Mary's Meals to transform the lives of children in Ethiopia.

Click the link to learn more about this incredible event: <https://bit.ly/4g1kWSH>

Mary's Meals Medjugorje



The Connaught
telegraph

Home News ▾ Sport ▾ Entertainment



Sister Medhin Tesfay from Ethiopia was presented with the Romero International Award at the Trócaire 50th Anniversary Conference in recognition of her extraordinary courage and commitment to the transformative and life-saving work of the Daughters of Charity in Ethiopia for nearly three decades. She is pictured here with Caoimhe de Barra, CEO of Trócaire. Photo: Justin Kernaghan

Trócaire award recipient thanks Mayo public for 50 years of support



Kindeya Gebrehiwot, PhD, Prof

@ProfKindeya

I congratulate Sister Medhin Tesfay for receiving the prestigious **#Oscar #Romero International Award** at the **#Trócaire 50th Anniversary Conference** in recognition of her extraordinary courage and commitment to the transformative and life-saving work of the Daughters of Charity for nearly three decades. I had the opportunity to witness her great humanitarian works in **#Tigray** & we are very proud of her achievement. We thank you sister!

con-telegraph.ie/2023/09/08/tro...





Regional Recognition



We thank you DoC



Thank You!!

Named after Arch Bisho Romero, who died for the liberation of the Vulnerable!



የኢትዮጵያ ተቆይታ ቤቶች ለግብርናና ለጥበቃ ልማት ተግባር



The Ethiopian Catholic Church
Social and Development Commission



DAUGHTERS
OF CHARITY
COORDINATING OFFICE TIGRAY

**Thank You For
Your Attention!**



✝

- ዝካተት
- ዝወሰኑ
- ቕፅል
- ቕረ
- ዝቕየር?

